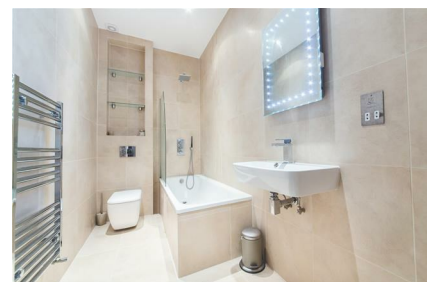


Parkheath

Sold on Service

Queens Crescent NW5
£2,100 PCM (£485 per week) - Camden Band C

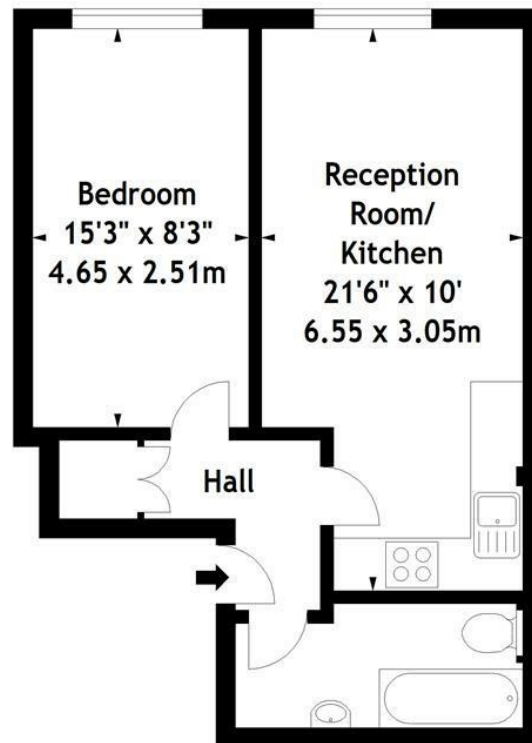
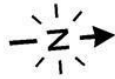


Spacious 1 double bedroom apartment
Wood floors and neutral decor
Fully tiled contemporary bathroom
Close to Belsize Park tube and Kentish Town West
overground

2nd floor of period conversion
Bright reception with modern open plan kitchen
A few minutes walk to Chalk Farm tube
EPC: Rating C, Council Tax: Camden band C

Belsize Park Office 020 7431 3104

Queens Crescent, NW5
Approx. Gross Internal Area
436 Sq Ft - 40.50 Sq M



Second Floor

Measured in accordance with RICS guidelines. Every attempt is made to ensure accuracy, however all measurements are approximate. This floor plan is for illustrative purposes only and is not to scale.

© Datagraphy Ltd 2017

Photographs * Floorplans * Virtual Tours
Tel: 0845 643 4401 www.datagraphy.com

The particulars do not constitute part of an offer or contract. The particulars, including text, photographs and plans, are for the guidance only of prospective purchasers/tenants and must not be relied upon as statements of fact. The descriptions provided therein represent the opinion of the author and whilst given in good faith should not be construed as statements of fact. Nothing in these particulars shall be deemed a statement that the property is in good condition or otherwise or that any services or facilities are in good working order. All measurements are approximate